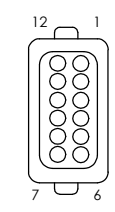


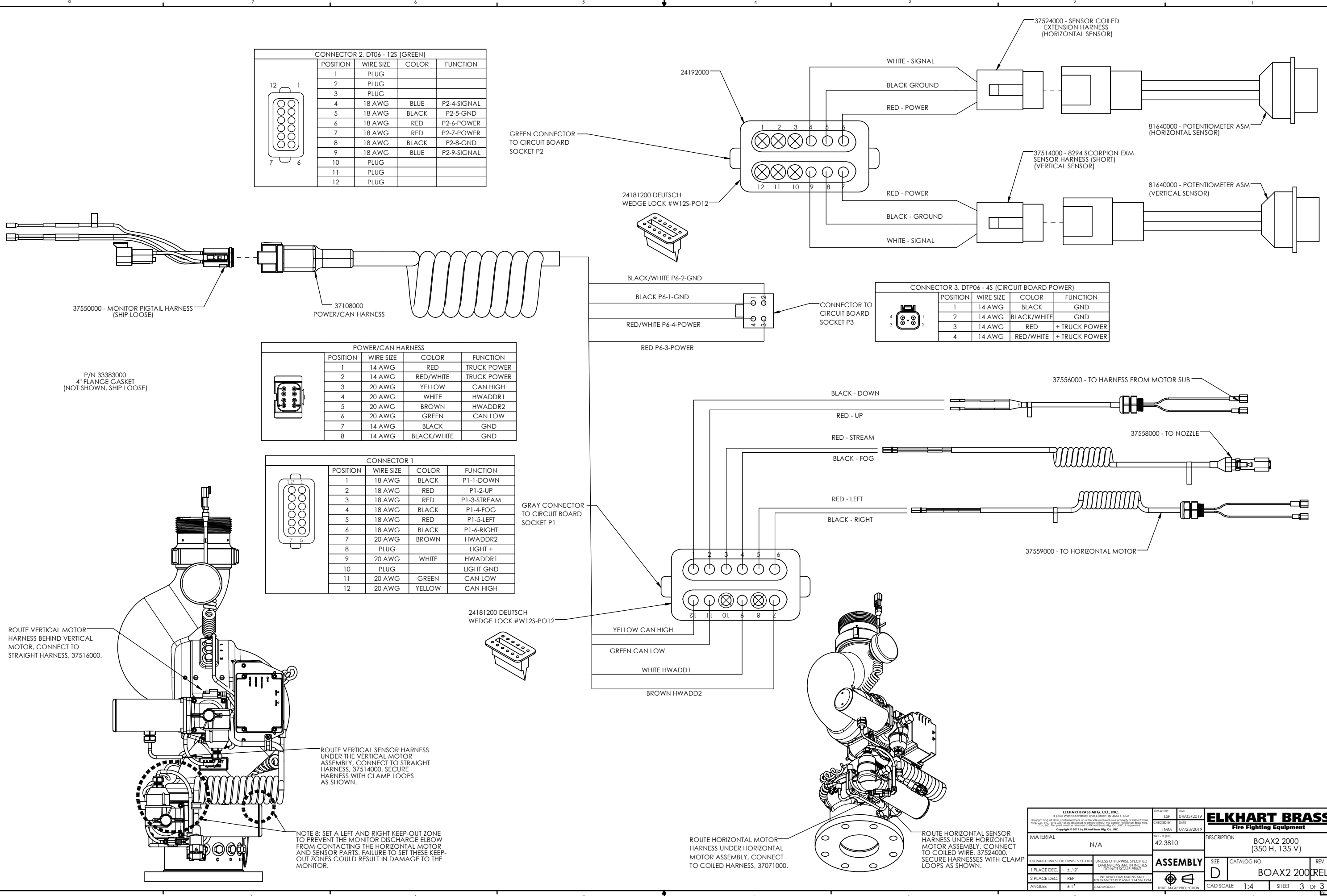
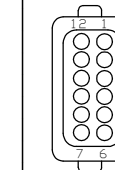
CONNECTOR 2, DT06 - 12S (GREEN)				
POSITION	WIRE SIZE	COLOR	FUNCTION	
1	PLUG			
2	PLUG			
3	PLUG			
4	18 AWG	BLUE	P2-4-SIGNAL	
5	18 AWG	BLACK	P2-5-GND	
6	18 AWG	RED	P2-6-POWER	
7	18 AWG	RED	P2-7-POWER	
8	18 AWG	BLACK	P2-8-GND	
9	18 AWG	BLUE	P2-9-SIGNAL	
10	PLUG			
11	PLUG			
12	PLUG			



CONNECTOR 3, DTP06 - 4S (CIRCUIT BOARD POWER)				
POSITION	WIRE SIZE	COLOR	FUNCTION	
1	14 AWG	BLACK	GND	
2	14 AWG	BLACK/WHITE	GND	
3	14 AWG	RED	+ TRUCK POWER	
4	14 AWG	RED/WHITE	+ TRUCK POWER	

POWER/CAN HARNESS				
POSITION	WIRE SIZE	COLOR	FUNCTION	
1	14 AWG	RED	TRUCK POWER	
2	14 AWG	RED/WHITE	TRUCK POWER	
3	20 AWG	YELLOW	CAN HIGH	
4	20 AWG	WHITE	HWADDR1	
5	20 AWG	BROWN	HWADDR2	
6	20 AWG	GREEN	CAN LOW	
7	14 AWG	BLACK	GND	
8	14 AWG	BLACK/WHITE	GND	

CONNECTOR 1				
POSITION	WIRE SIZE	COLOR	FUNCTION	
1	18 AWG	BLACK	P1-1-DOWN	
2	18 AWG	RED	P1-2-UP	
3	18 AWG	RED	P1-3-STREAM	
4	18 AWG	BLACK	P1-4-FOG	
5	18 AWG	RED	P1-5-LEFT	
6	18 AWG	BLACK	P1-6-RIGHT	
7	20 AWG	BROWN	HWADDR2	
8	PLUG		LIGHT +	
9	20 AWG	WHITE	HWADDR1	
10	PLUG		LIGHT GND	
11	20 AWG	GREEN	CAN LOW	
12	20 AWG	YELLOW	CAN HIGH	



P/N 33383000
4" FLANGE GASKET
(NOT SHOWN, SHIP LOOSE)

ROUTE VERTICAL MOTOR HARNESS BEHIND VERTICAL MOTOR. CONNECT TO STRAIGHT HARNESS, 37516000.

ROUTE VERTICAL SENSOR HARNESS UNDER THE VERTICAL MOTOR ASSEMBLY. CONNECT TO STRAIGHT HARNESS, 37514000. SECURE HARNESS WITH CLAMP LOOPS AS SHOWN.

NOTE 8: SET A LEFT AND RIGHT KEEP-OUT ZONE TO PREVENT THE MONITOR DISCHARGE ELBOW FROM CONTACTING THE HORIZONTAL MOTOR AND SENSOR PARTS. FAILURE TO SET THESE KEEP-OUT ZONES COULD RESULT IN DAMAGE TO THE MONITOR.

ROUTE HORIZONTAL MOTOR HARNESS UNDER HORIZONTAL MOTOR ASSEMBLY. CONNECT TO COILED HARNESS, 37071000.

ROUTE HORIZONTAL SENSOR HARNESS UNDER HORIZONTAL MOTOR ASSEMBLY. CONNECT TO COILED WIRE, 37524000. SECURE HARNESSES WITH CLAMP LOOPS AS SHOWN.

<small>ELKHART BRASS MFG. CO., INC.</small> <small>11322 West Beardsley Ave. Elkhart, IN 46514, USA</small> <small>Should not be used without the approval of Elkhart Brass Mfg. Co., Inc. This part may be returned to Elkhart Brass Mfg. Co., Inc. if requested.</small> <small>Copyright © 2012 by Elkhart Brass Mfg. Co., Inc.</small>		<small>DESIGN BY</small> LSP <small>DATE</small> 04/05/2019 <small>CHECKED BY</small> TMM <small>DATE</small> 07/23/2019	ELKHART BRASS Fire Fighting Equipment
<small>MATERIAL</small> N/A <small>TOLERANCE UNLESS OTHERWISE SPECIFIED</small> ±.12" <small>1 PLACE DEC.</small> ±.12" <small>2 PLACE DEC.</small> REF <small>ANGLES</small> ±1°	<small>HEIGHT</small> 42.3810 ASSEMBLY <small>UNLESS OTHERWISE SPECIFIED DIMENSIONS ARE IN INCHES</small> <small>DO NOT SCALE PRINT</small> <small>INTERPRET DIMENSIONS AND TOLERANCES PER ASME Y14.5M 1994</small> <small>CAD MODEL</small>	<small>DESCRIPTION</small> BOAX2 2000 (350 H, 135 V) <small>SIZE</small> D <small>CATALOG NO.</small> BOAX2 2000 <small>REV.</small> 1 <small>CAD SCALE</small> 1:4 <small>SHEET</small> 3 OF 3	

02007451 REV. 1