






Base Size	FLOW RANGE	PRESSURE	TYPE	BREAK-APART COMPONENTS			GRIP			BASE**					HANDLE		TEETH		Model						
	GPM (LPM)	PSI (BAR)		Tip	Shut-Off	Smooth Bore	Pistol Grip	Playpipe	Ladderhook	TYPE		LENGTH			Tab	Horseshoe	Spinning	Molded							
									Rigid	Swivel	Free Swivel	Long	Short												
1"	10-75 (38-284)	100 (6.89)	NOZZLE																SM-3F						
			NOZZLE				*													SM-3FG					
			TIP									s								TSM-3F					
1.5"	60-125 (227-475)	100 (6.89)	NOZZLE																	SM-10F					
			NOZZLE				*														SM-10FG				
			NOZZLE																			SM-10FB (All Brass)			
			TIP																			TSM-10F			
			BREAK-APART	TSM-10F	LB-275A																	STSM-10F			
			BREAK-APART	TSM-10F	LB-275A																	STSM-10F			
	60-200 (227-757)	75 (5.17)	NOZZLE																		SM-20FLP				
			NOZZLE				*															SM-20FGLP			
			TIP																			TSM-20FLP			
			BREAK-APART	TSM-20FLP	B-375AT		*																STSM-20FATLP		
			BREAK-APART	TSM-20FLP	B-375GAT		*	*															STSM-20FGATLP		
			BREAK-APART	TSM-20FLP	B-375GAT		*	*															STSM-20FGATLP		
	60-200 (227-757)	100 (6.89)	NOZZLE																			SM-20F			
			NOZZLE				*																SM-20FG		
			TIP																				TSM-20F		
			BREAK-APART	TSM-20F	B-275A																			STSM-20F	
			BREAK-APART	TSM-20F	B-275GA		*																	STSM-20FG	
			BREAK-APART	TSM-20F	B-375AT		*																	STSM-20FAT	
	75-325 (284-1230)	75 (5.17)	NOZZLE																			SM-30FLP			
			NOZZLE				*																SM-30FGLP		
			TIP																				TSM-30FLP		
			BREAK-APART	TSM-30FLP	B-375AT		*																	STSM-30FATLP	
			BREAK-APART	TSM-30FLP	B-375GAT		*	*																STSM-30FGATLP	
			BREAK-APART	TSM-30FLP	B-375GAT		*	*																STSM-30FGATLP	
75-325 (284-1230)	100 (6.89)	NOZZLE																				SM-30F			
		NOZZLE				*																	SM-30FG		
		TIP																					TSM-30F		
		BREAK-APART	TSM-30F	B-275A																				STSM-30F	
		BREAK-APART	TSM-30F	B-275GA		*																		STSM-30FG	
		BREAK-APART	TSM-30F	B-375AT		*																		STSM-30FAT	
75-325 (284-1230)	100 (6.89)	NOZZLE																				SM-30F			
		NOZZLE				*																	SM-30FG		
		TIP																					TSM-30F		
		BREAK-APART	TSM-30F	B-275A																				STSM-30F	
		BREAK-APART	TSM-30F	B-275GA		*																		STSM-30FG	
		BREAK-APART	TSM-30F	B-375AT		*																		STSM-30FAT	
75-325 (284-1230)	100 (6.89)	NOZZLE																				SM-30F			
		NOZZLE				*																	SM-30FG		
		TIP																					TSM-30F		
		BREAK-APART	TSM-30F	B-278L		*	*																	STSM-30BPALP	
		BREAK-APART	TSM-30F	DB-375GAT		*	*																	STDSM-30FGATLP	
		BREAK-APART	TSM-30F	DB-375GAT		*	*																	STDSM-30FGATLP	
2.5"	75-325 (284-1230)	75 (5.17)	NOZZLE																				DSM-30FLP		
			NOZZLE				*																	DSM-30FGLP	
			BREAK-APART	TSM-30FLP	B-278L		*	*																STSM-30BPALP	
			BREAK-APART	TSM-30FLP	DB-375GAT		*	*																	STDSM-30FGATLP
			TIP																						DTSM-30F
			NOZZLE				*																		DSM-30FG
75-325 (284-1230)	100 (6.89)	BREAK-APART	SM-30F	279LA																			SM-30PL		
		BREAK-APART	TSM-30F	B-278L		*	*																	STSM-30BPA	
		NOZZLE																						DSM-30F	
		BREAK-APART	TSM-30F	DB-275A																					STDSM-30F
		BREAK-APART	TSM-30F	DB-275GA		*																			STDSM-30FG
		BREAK-APART	TSM-30F	B-275A + 279LA		*	*																		STSM-30PL
75-325 (284-1230)	100 (6.89)	BREAK-APART	TSM-30F	DB-375AT		*																		STDSM-30FAT	
		BREAK-APART	TSM-30F	DB-375GAT		*	*																		STDSM-30FGAT

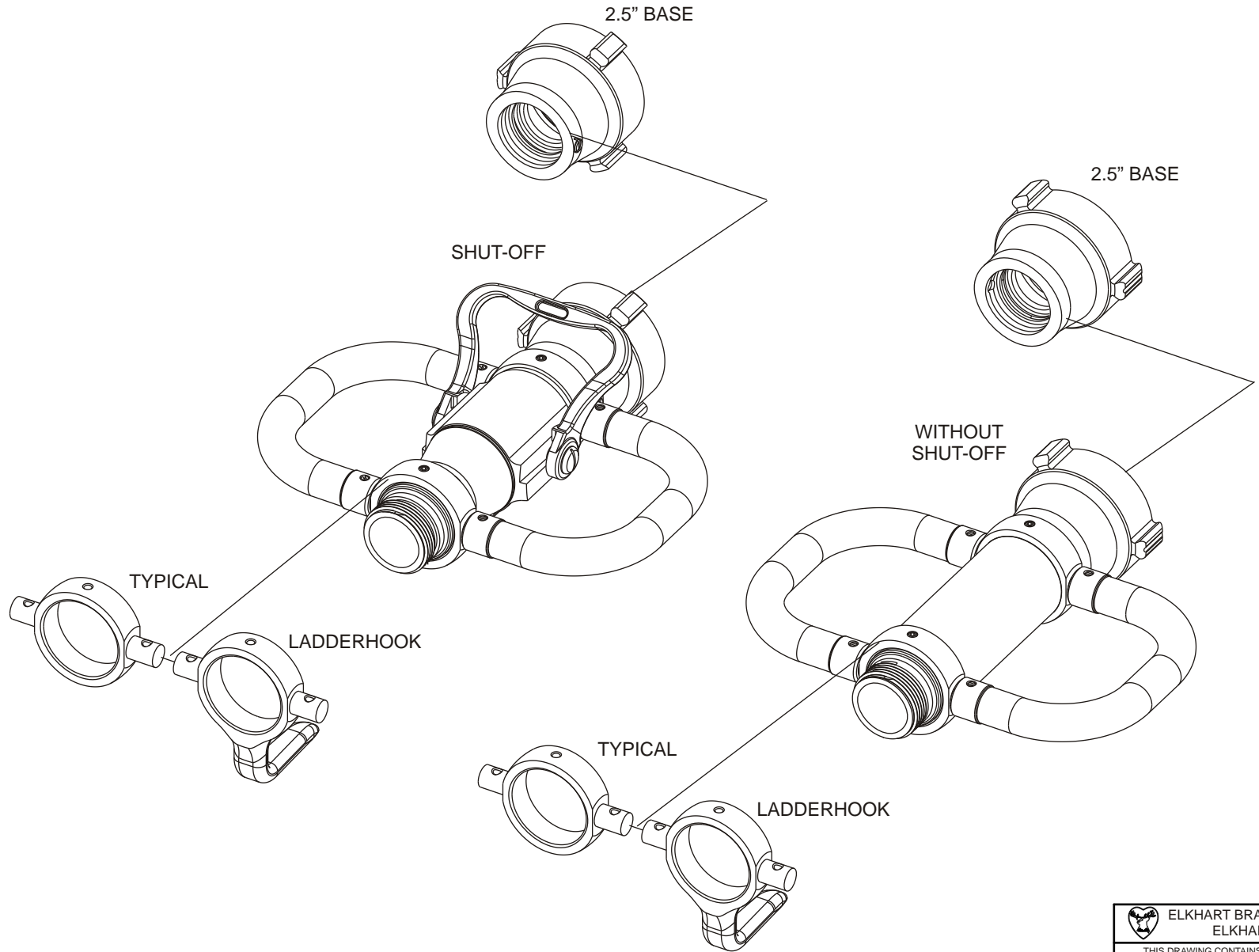
\* Listed flow rate for break-apart nozzle with integral smooth bore is for Select-O-Matic® nozzle tip only.

\*\* Base standard configuration on break-apart nozzles lists standard configuration for shut-off.


 <b>ELKHART BRASS MFG. CO., INC.</b> ELKHART, INDIANA	THIS DRAWING CONTAINS INFORMATION THAT IS PROPRIETARY TO ELKHART BRASS MFG. CO., INC. AND MAY NOT BE USED TO PRODUCE ANY PARTS, ASSEMBLIES OR PRODUCTS DESCRIBED HEREIN WITHOUT EXPRESS WRITTEN PERMISSION.	
	SELECT-O-MATIC PAGE 3 OF 3 06/2008	CONFIGURATION TABLE



**PLAYPIPE**




FIGURES DEPICT GENERAL PRODUCT TYPES ONLY AND ARE NOT INTENDED TO BE INCLUSIVE OF ALL PRODUCT FEATURES.

 <b>ELKHART BRASS MFG. CO., INC.</b> ELKHART, INDIANA	
<small>THIS DRAWING CONTAINS INFORMATION THAT IS PROPRIETARY TO ELKHART BRASS MFG. CO., INC. AND MAY NOT BE USED TO PRODUCE ANY PARTS, ASSEMBLIES OR PRODUCTS DESCRIBED HEREIN WITHOUT EXPRESS WRITTEN PERMISSION.</small>	
BALL SHUT-OFF & PLAYPIPE PAGE 2 OF 3 06/2008	CONFIGURATION TABLE

INLET SIZE	OUTLET SIZE	WATERWAY SIZE				AVAILABLE INTEGRAL SMOOTH BORE DISCHARGE SIZE				BALL TYPES			SEAT		DRIVE		GRIP			BASE					HANDLE		MATERIAL		Model									
		1"	1 3/8"	1 1/2"	1 3/4"	1/2"	7/8"	15/16"	1"	1 1/8"	1 1/4"	Single Cut-away	Double Cut-away	Full Round	Single Adjustable	Double Non-Adjustable	Single	Double	Pistol Grip	Playpipe	Ladderhook	TYPE			LENGTH		Tab	Horseshoe		Brass	Elk-O-Lite®							
																						Rigid	Swivel	Free Swivel	Long	Short												
1"	1"											S										S		O				S	O							SB-275		
													S										O		S				S	O							SB-275-A	
													S										O		S				S	O							SB-275-AT	
													S										O		S				S	O							SB-275-G	
													S										O		S				S	O							SB-275-GA	
											S										O		S				S	O								SB-275-GAT		
1.5"	1.5"											S										O	S	O				O	S							LB-275		
												S										O	S	O				O	S								LB-275-A	
													S									O	O	S				O	S								LB-275-GA	
													S									O	S	O				O	S								B-275	
													S									O	S	O				O	S								B-275-A	
													S									O	O	S				O	S								B-275-GA	
												S	O	O								O	O	S				O	S								B-375-A	
												S	O	O								O	O	S				O	S								B-375-AT	
												S	O	O								O	O	S				O	S								B-375-GA	
										S	O	O								O	O	S				O	S								B-375-GAT			
2.5"	1.5"											S									O	S	O				O	S								DB-275		
													S								O	S	O	S	O			O	S							DB-275-A		
													S								O	O	S	S	O			O	S								DB-275-GA	
												S	O	O									S	S	O			O	S								DB-375-A	
												S	O	O									S	S	O			O	S								DB-375-GA	
												S	O	O									S	S	O			O	S								DB-375-AT	
												S	O	O									S	S	O			O	S								DB-375-GAT	
													S										S						S								B-278	
													S										S						S								B-278-AT	
													S										S						S									B-278-L
													S										S						S									B-877-A**
											S										S															279-L		
2.5"	2.5"										S										S															JB-275		
												S										S														JB-275-A		
												S										S															JB-275-GA	

\*\* B-278 (w/out ladderhook) + ST-190-BA (Triple Stack Tip)

 <b>ELKHART BRASS MFG. CO., INC.</b> ELKHART, INDIANA	
<small>THIS DRAWING CONTAINS INFORMATION THAT IS PROPRIETARY TO ELKHART BRASS MFG. CO., INC. AND MAY NOT BE USED TO PRODUCE ANY PARTS, ASSEMBLIES OR PRODUCTS DESCRIBED HEREIN WITHOUT EXPRESS WRITTEN PERMISSION.</small>	
BALL SHUT-OFF & PLAYPIPE PAGE 3 OF 3 06/2008	CONFIGURATION TABLE