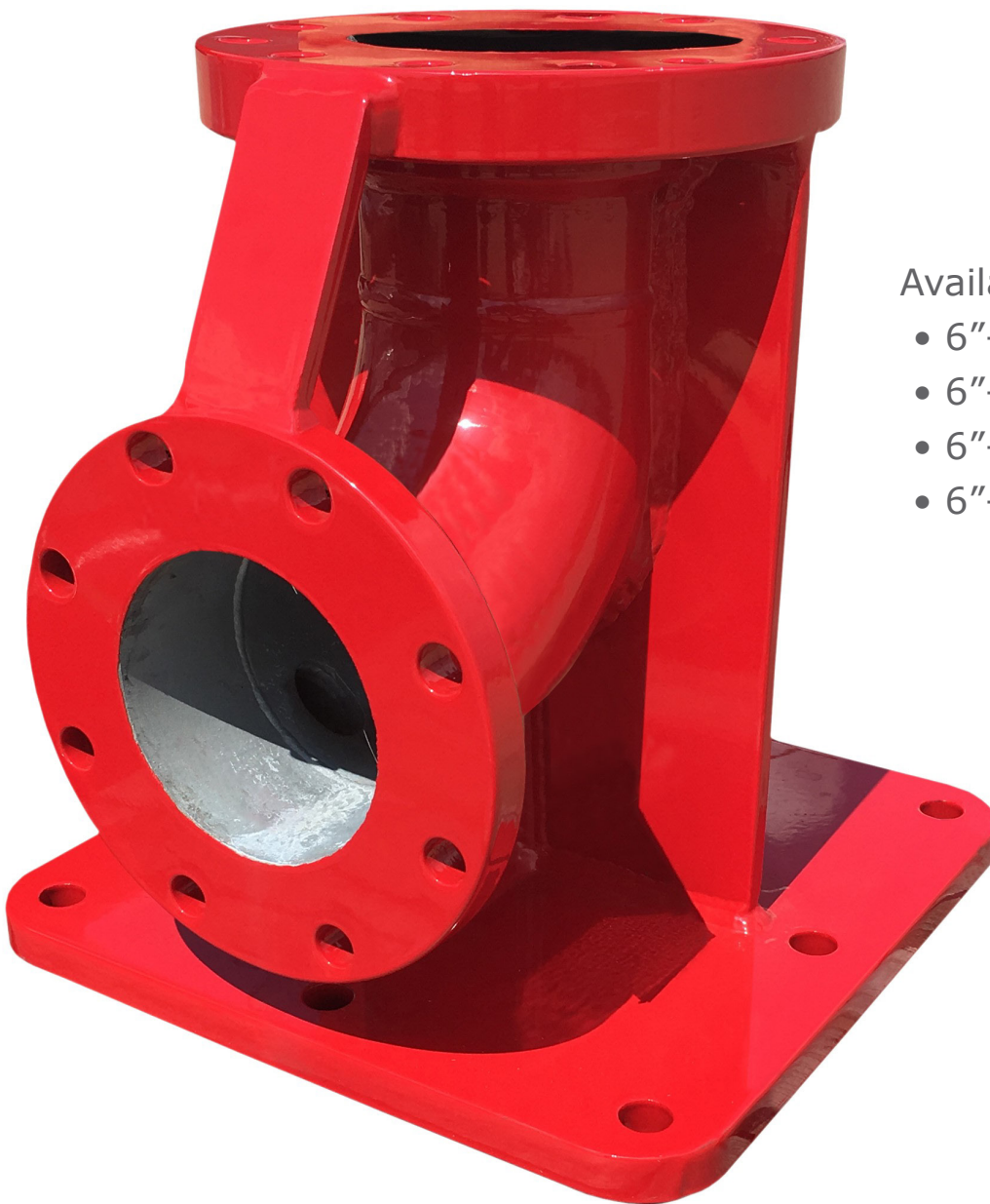


## 90° Intake Base

- Carbon steel construction
- 6"-150# flange inlet
- 4"-150# or 6"-300# flange outlet
- Full 4" waterway
- Red epoxy finish
- Used with 299-11EL & 8394-02RC elevated monitors



### Available Configurations:

- 6"-150# FF x 4"-150# FF
- 6"-150# FF x 4"-150# RF
- 6"-150# FF x 6"-300# FF
- 6"-150# FF x 6"-300# RF